

# Specifications & Accommodations

## Specifications

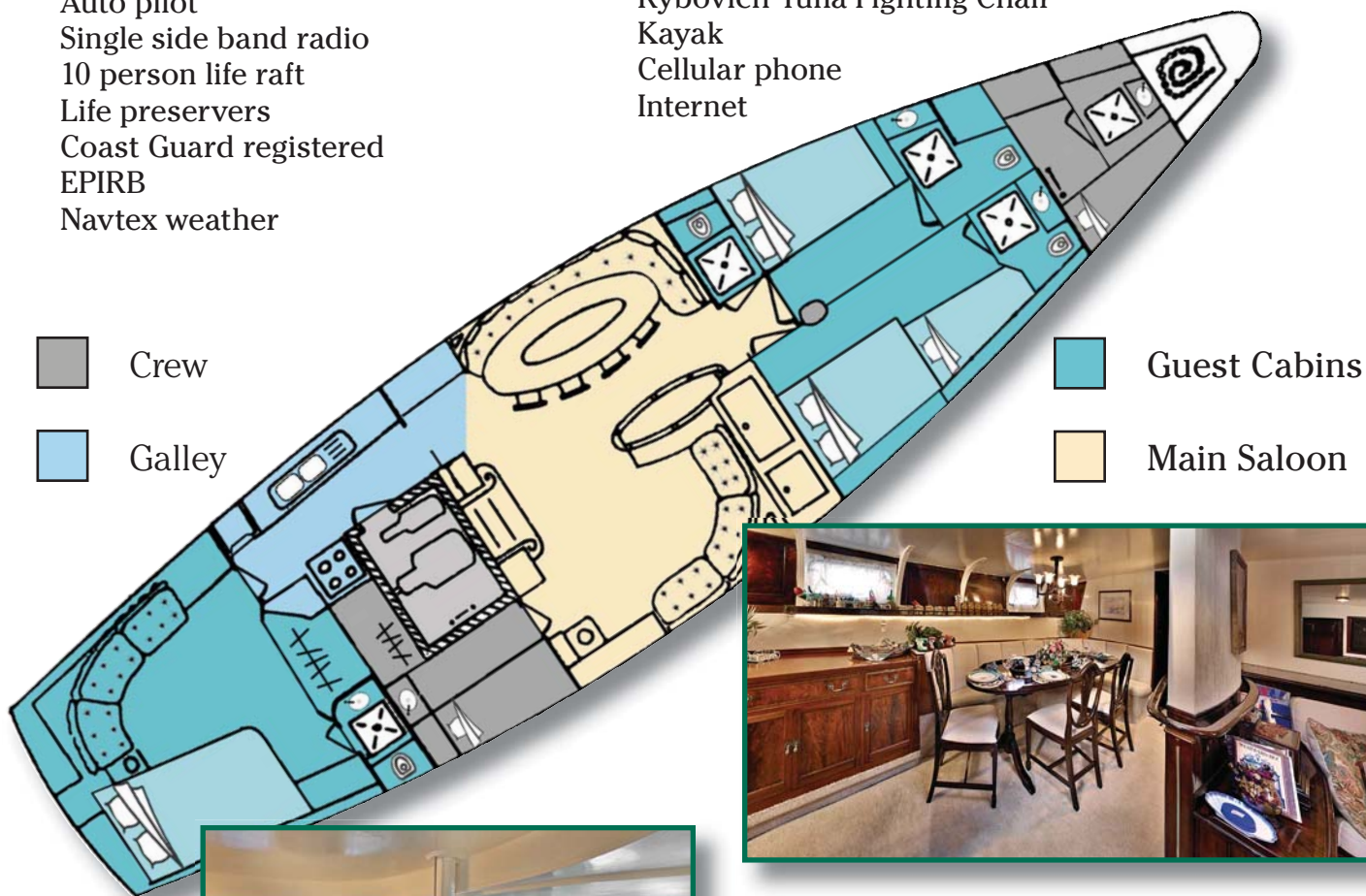
Overall length: 72ft  
Beam 18ft  
Draft 4.5/14ft  
Designer Michael Shaw  
Built England  
Hull speed 10 knots  
Fuel capacity 800 gals.  
Water capacity 1600 gals

## Ships Equipment

135hp Diesel engine  
8 kw Generator  
24 mile Radar & GPS  
Depth sounder & VHF radio  
Auto pilot  
Single side band radio  
10 person life raft  
Life preservers  
Coast Guard registered  
EPIRB  
Navtex weather

## Comfort & Recreation

Air conditioning  
22 opening ports, 3 hatches  
4 cabins w/ heads  
TV, VCR & DVD  
CD/Stereo  
Library, movies, games  
Karaoke machine  
Swim ladder  
Bimini  
Hammocks  
Deck shower  
14 ft. AB dinghy, with 40HP  
Water skis, tubing  
Snorkel gear  
Rybovich Tuna Fighting Chair  
Kayak  
Cellular phone  
Internet



Grey Crew  
Light Blue Galley

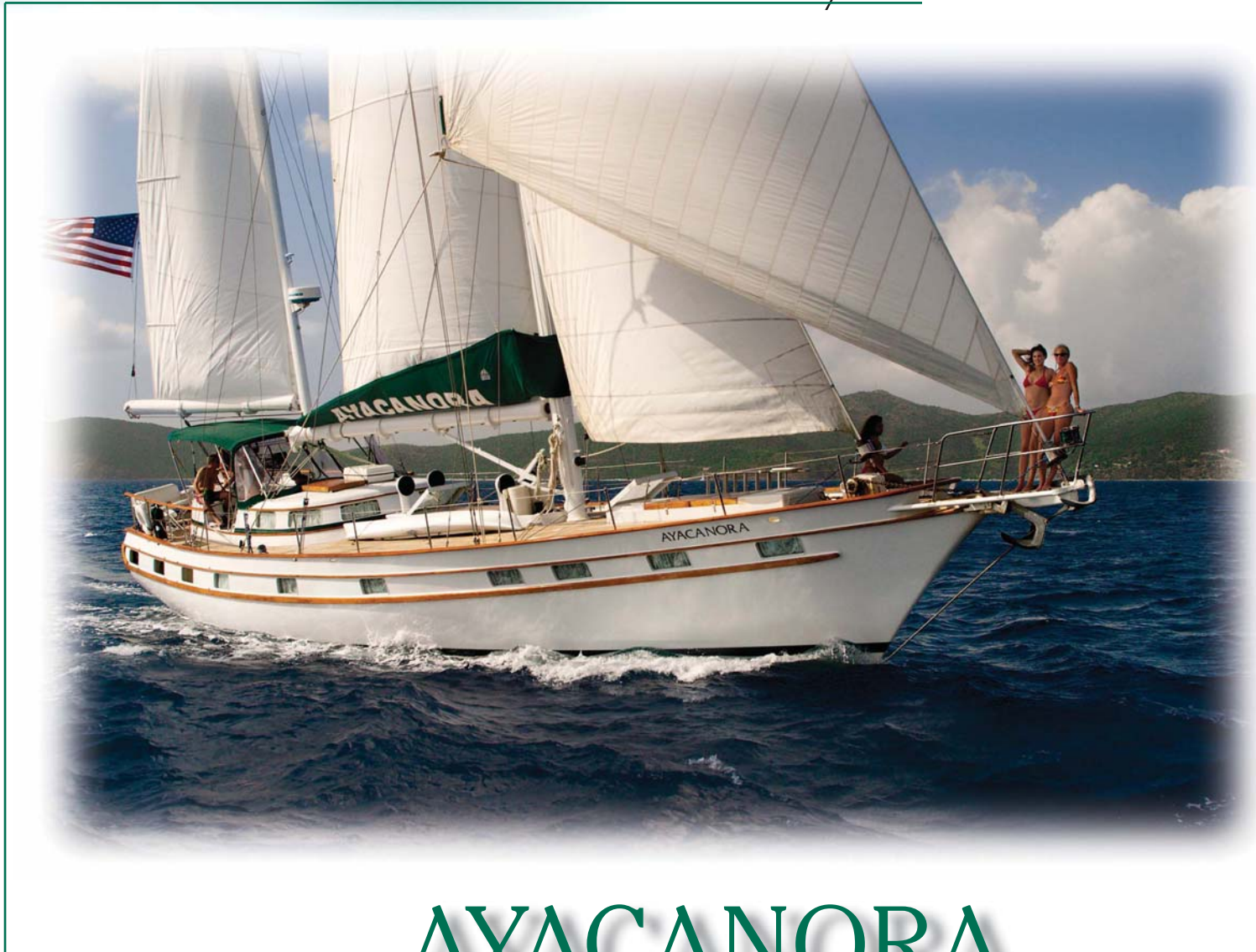
Teal Guest Cabins  
Yellow Main Saloon



For further information contact:



*A Yacht of Distinction*



**AYACANORA**



*Come aboard for the best things in life*



Don't let your dreams sit on the shelf of life gathering dust. Come aboard Ayacanora. Named for the beautiful and willful heroine of the Charles Kingsley classic "Westward Ho!" she's a stunning 72' yacht with unique appointments.

For your comfort, Ayacanora's three double staterooms each contain an ensuite bathroom. A spacious area midships consisting of the main saloon and dining room is the epitome of well-appointed nautical style and grace.

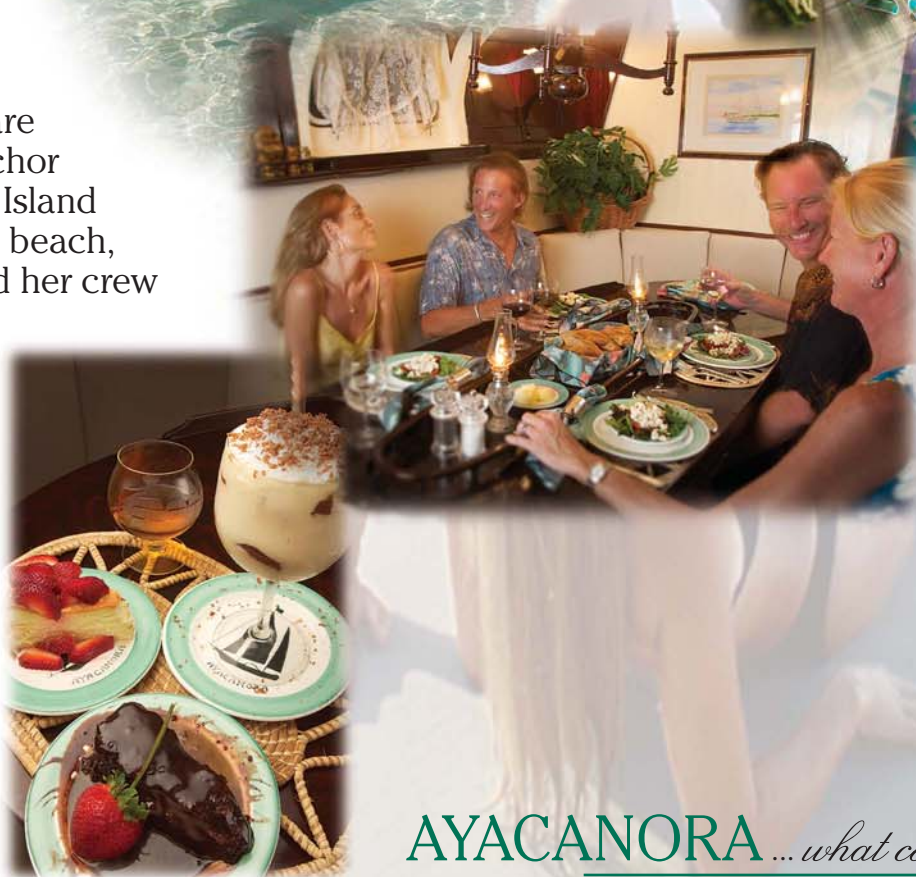




You can spend countless moments relaxing on the vast deck, and you'll dine at a mirror-polished mahogany table below decks.



Whether you are relaxing at anchor off a secluded Island or strolling the beach, Ayacanora and her crew can treat you to the best things in life.



**AYACANORA** ... *what could be better?*